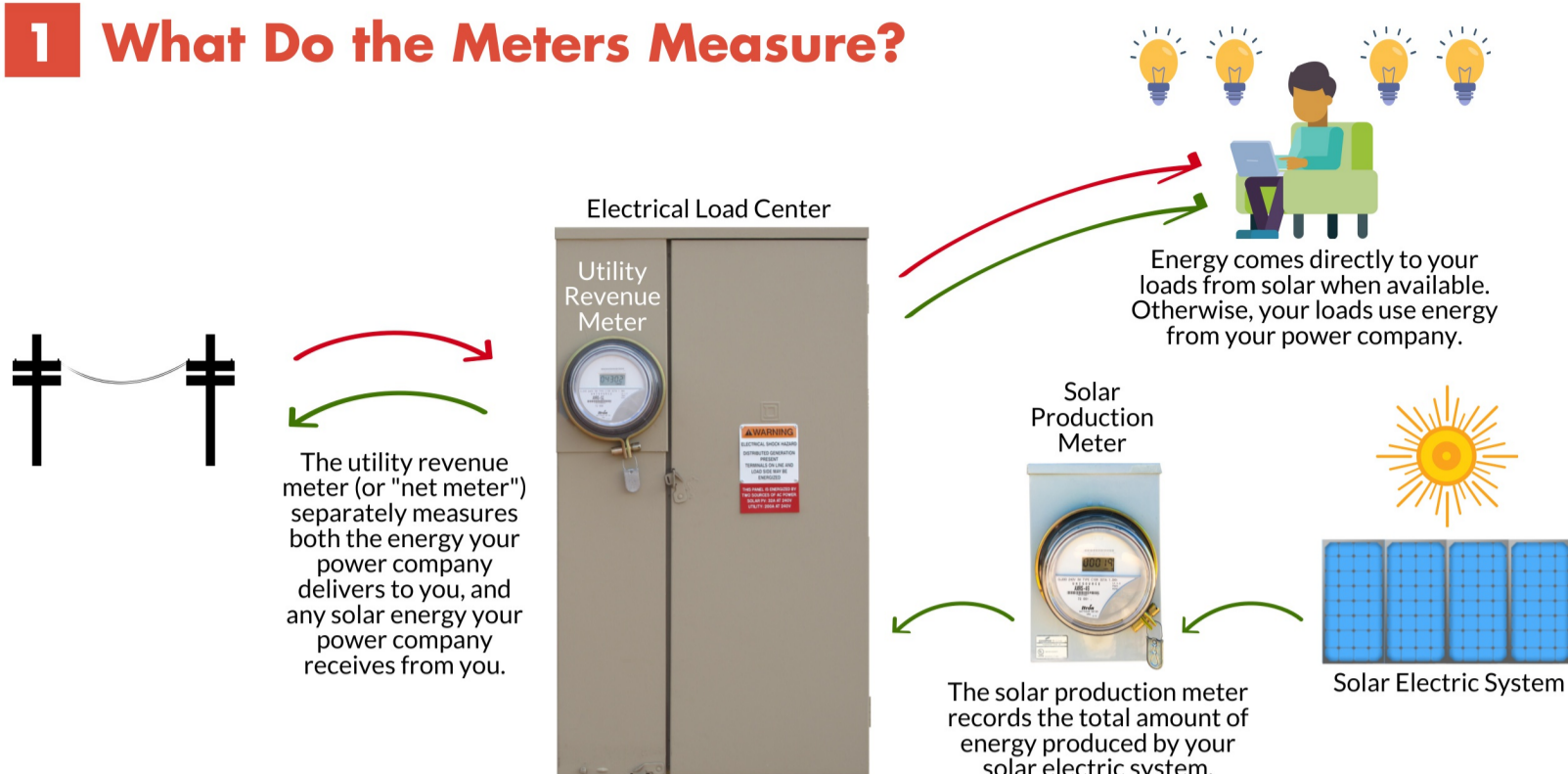
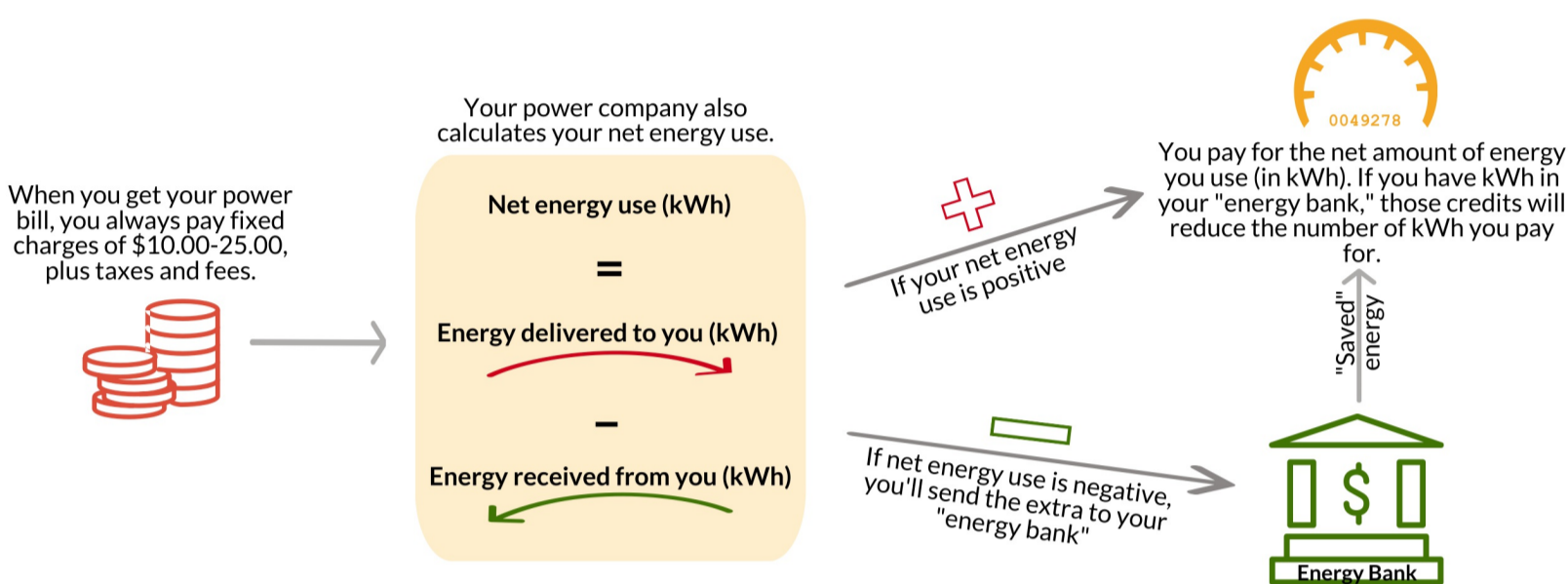


How Does Net Metering Work With My Electric Bill?

1 What Do the Meters Measure?



2 How Does This Work With My Bill?



How long can I store energy in my "bank?"

Once each year, your utility will zero out any remaining energy balance in your "bank," and credit you wholesale value for the energy. This is typically done in September or October, depending on the utility. Wholesale value is about 2.5¢/kWh for most Arizona utilities.

What do the codes on my meter and bill mean?



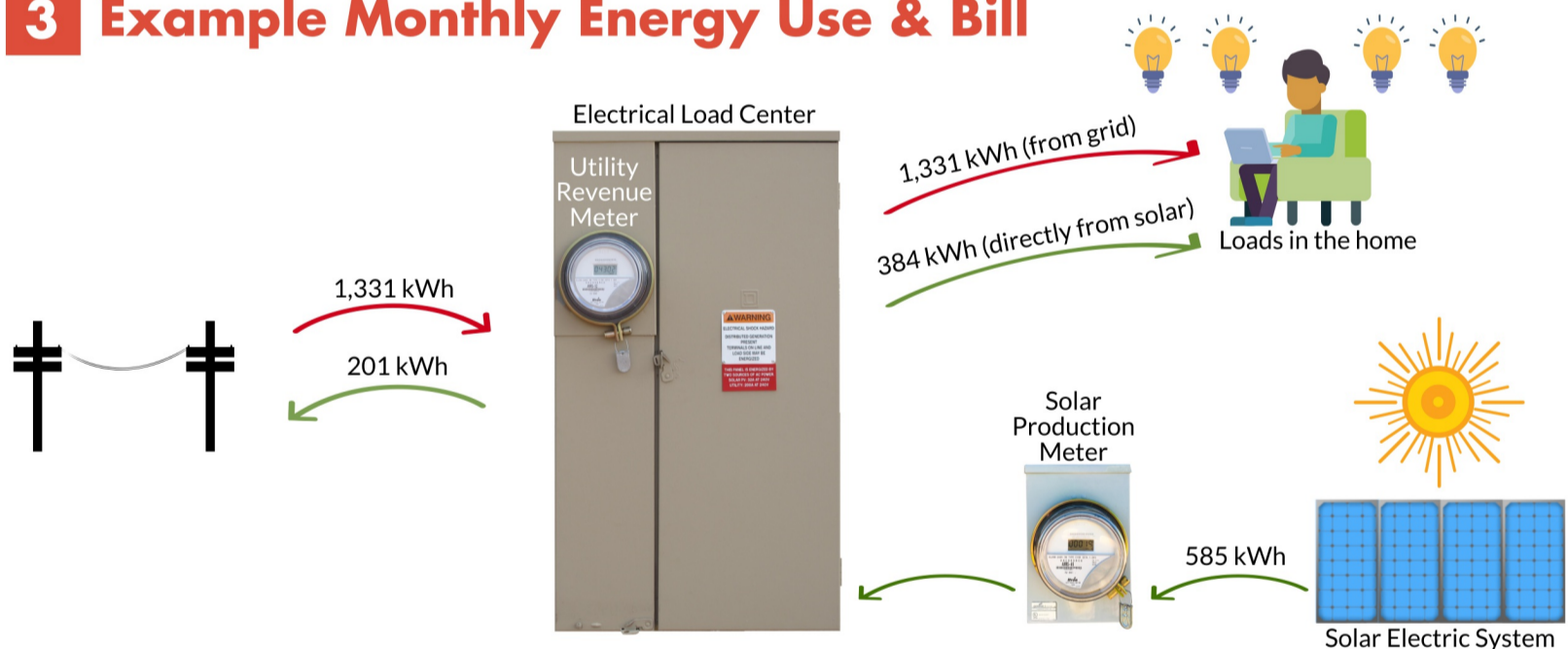
Utility	Energy Delivered To You		Energy Received From You	
	On Meter	On Bill	On Meter	On Bill
TEP	DEL	kWh	REC	KBH
SSVEC	DEL	NR1DE	REC	NGE
Trico	101		201	
APS	3	Electricity from APS	5*	Electricity credited

*This code varies by meter. See tinyurl.com/APSMeterCodes

© 2017 Net Zero Solar, LLC

www.netzerosolar.net

3 Example Monthly Energy Use & Bill



NET METERING

Excess KWH Credit carried forward from last month 34
Excess KWH Credit carried forward to next month 0

DELIVERY SERVICES

Basic Service Charge 13.00
Delivery - 1st 500 kWh 500.00 @ \$0.066152 33.08
Delivery - 501-1,000 kWh 500.00 @ \$0.081152 40.58
Delivery - above 1001 kWh 96.00 @ \$0.086652 8.32

POWER SUPPLY CHARGES

Summer - kWh 1,096.00 @ \$0.035861 39.30
PPFAC - kWh 1,096.00 @ \$-0.001956 2.14 CR

SURCHARGES

Renewable Energy Standard Tariff 4.42
DSM Surcharge - kWh 1,096.00 @ \$0.001916 2.10
ECA Surcharge - kWh 1,096.00 @ \$0.000335 0.37
LFCR EE 1.2068% of \$132.14 1.59
LFCR DG 0.4406% of \$132.14 0.58

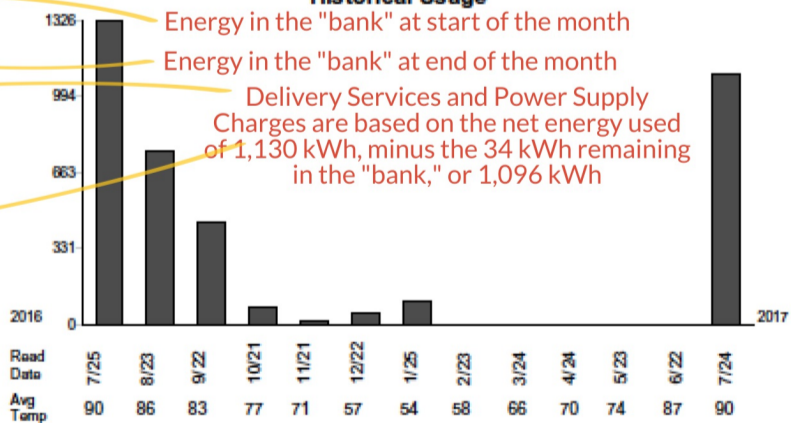
TAXES AND ASSESSMENTS

ACC Assessment 0.34
RUCO Assessment 0.05
City Franchise Fee 3.19
State Sales Tax 8.29
Regional Transportation Authority Tax 0.74
City Sales Tax 3.54
Public Utility Tax 3.19

TOTAL CURRENT CHARGES - Electric Service 160.54

Meter	Unit of Measure	Next Read Date	Current Read Date	Prior Read Date	Days	Current Reading	- Prior Reading	= Reading Difference	x Multiplier	= Usage
SK2-18464	KWH	8-22	7-24	6-22	32	20032	18701	1331	1	1331
SK2-18464	KBH	8-22	7-24	6-22	32	11225	11024	201	1	201
								Net energy used	Net	1130

Historical Usage



Where did my solar production go? I don't see it on my electric bill.



Your utility bill doesn't show total solar production—it only shows energy exported to the grid. Solar energy that's used immediately (called "self-consumption," or "self-generation") can't be found on your bill. If you receive large power bill, you'll want to make sure your solar electric system is functioning using your monitoring system, and also check if you've been using more electricity than usual.

Can I see my energy use and solar production?



Yes! We install systems with Enphase MyEnlighten monitoring, which show your solar energy production. Most of our systems also include energy consumption monitoring, which allows you to track your energy use over time.



© 2017 Net Zero Solar, LLC

www.netzerosolar.net